

MARINE TRAINING SIMULATORS - RECENT

In 2000, STA were commissioned by Diamond to replace the Digitran electronic hardware with modern PC-based (not PLC-based) hardware. Simultaneously, the simulation software is being upgraded by STA. The main upgrades are:

- Interface with industry-standard mooring and riser software from Orcina, UK (the Orcaflex dynamic analysis package, for which STA are the US agents)
- Network the main instructor's computer to other PCs. This enables displays and interaction with an almost unlimited number of other computers, sharing the same database of simulation information. It also enables industry standard software like Microsoft Excel and Access to be used for driving displays.



FIGURE 8 – Remote Mooring Winch Panel

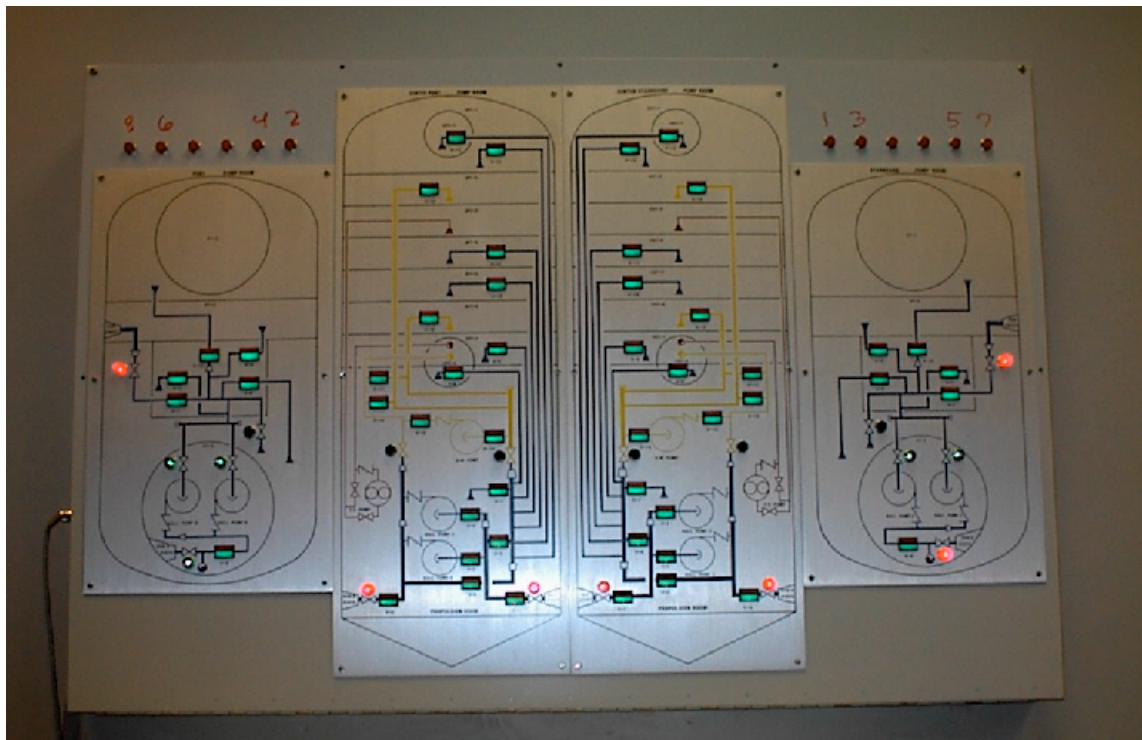


FIGURE 9– Remote Mimic Panel for Observers

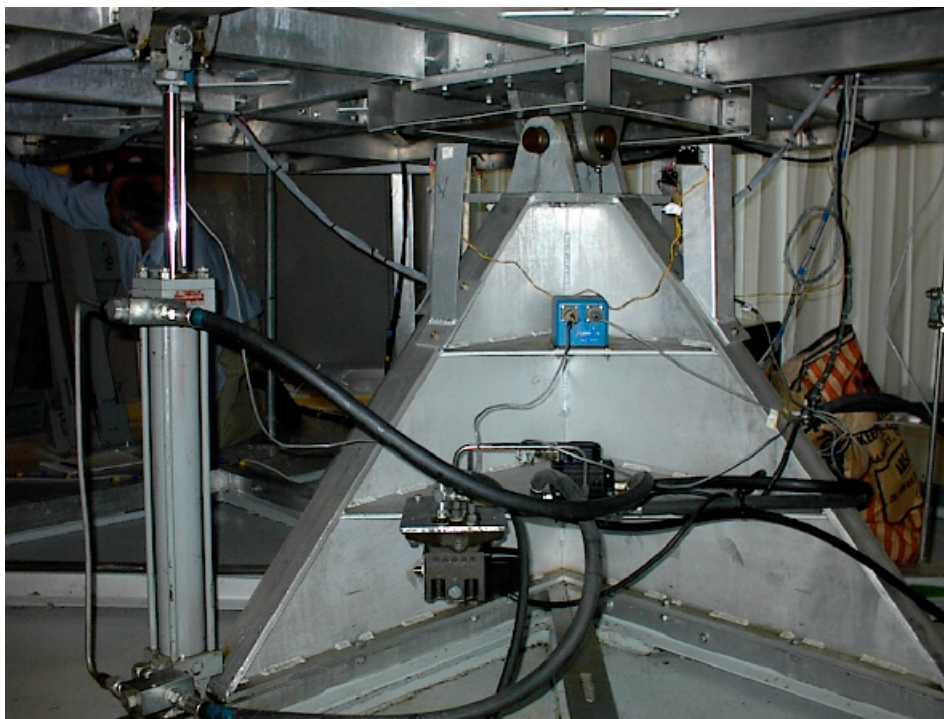


FIGURE 10– Central Universal Joint Support on Diamond Table
Note one hydraulic ram on left of photograph.